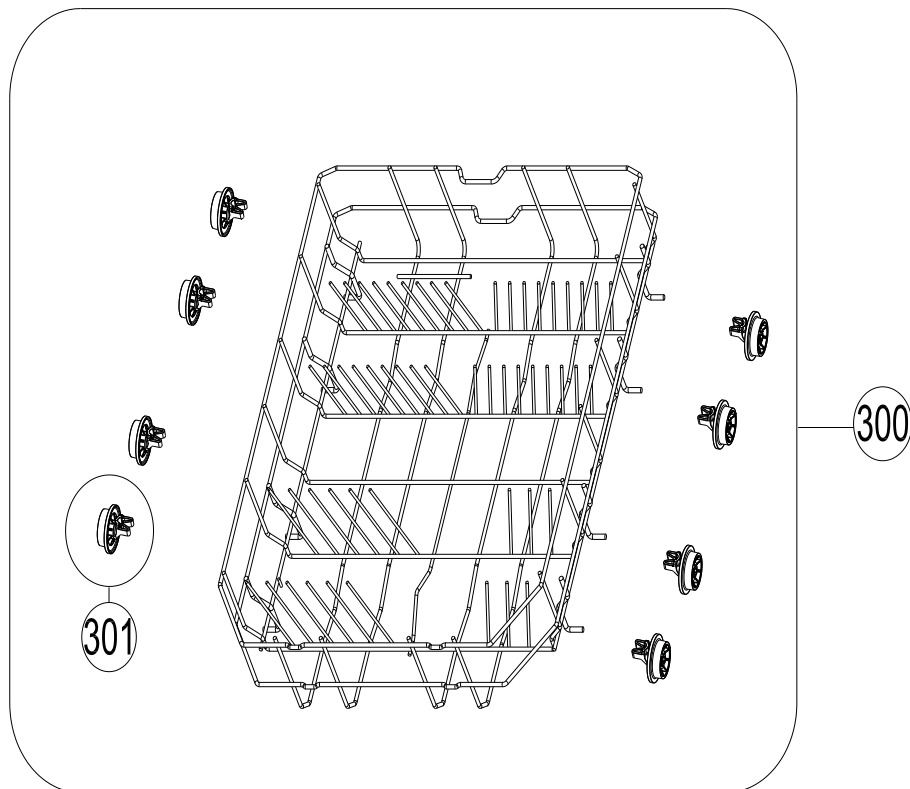
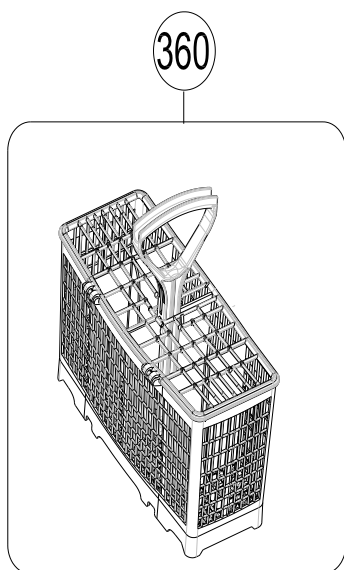


**VESTEL**

WHITE GOODS

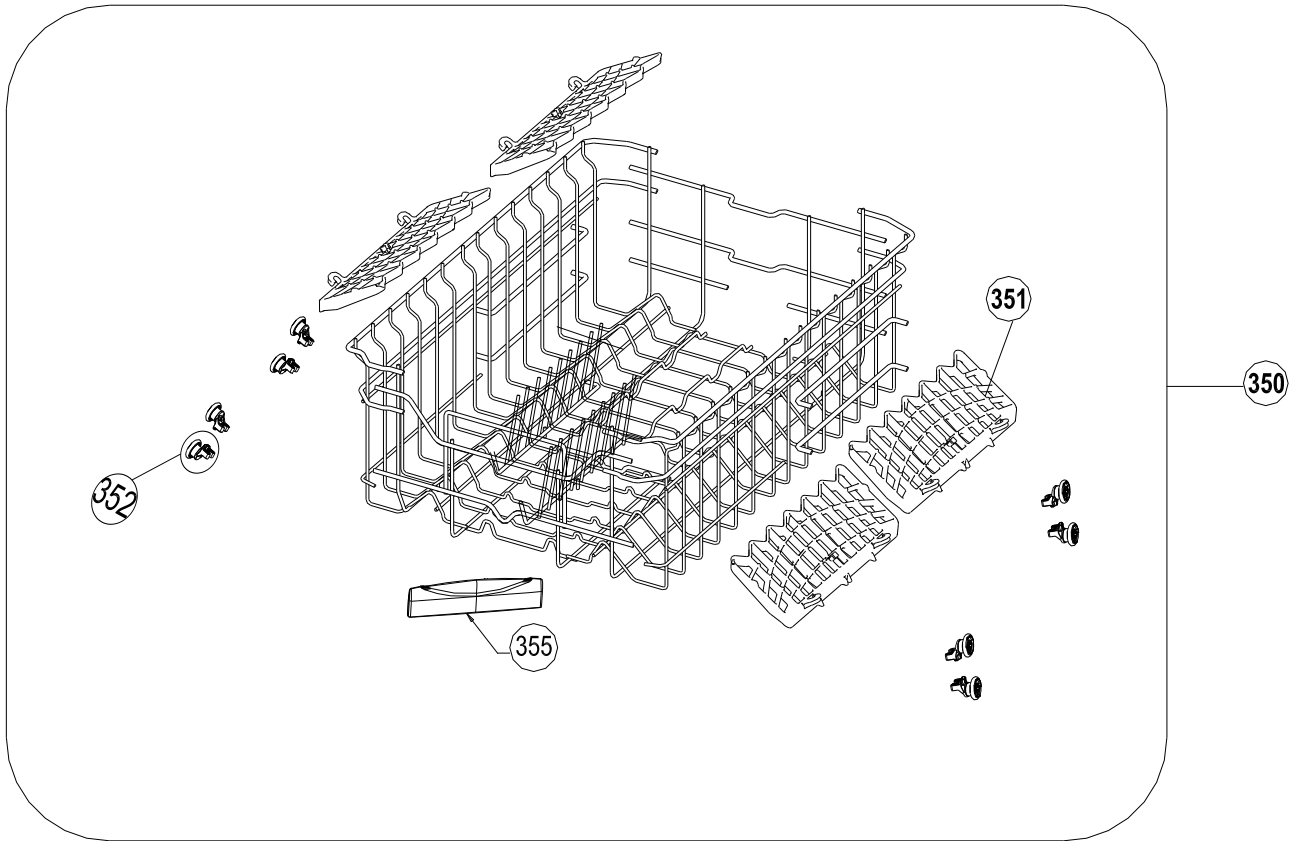
VESTEL DISWASHER MACH .

LOWER BASKET GROUP

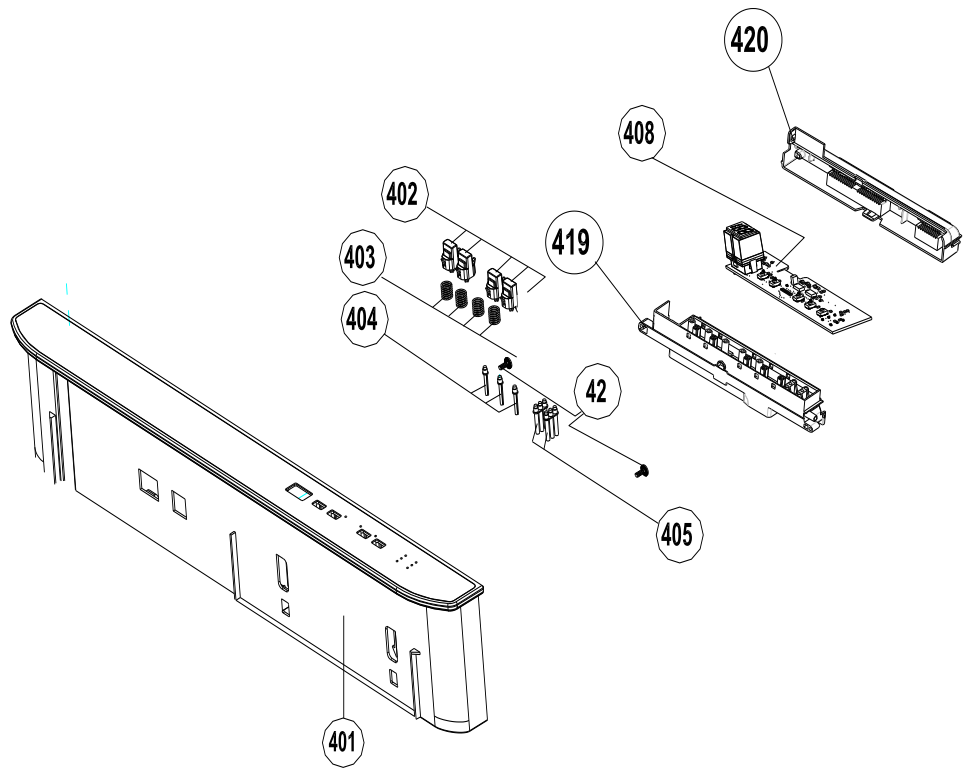
CUSTOMER  
SUPPORT

| NO  | PART NAME                   |
|-----|-----------------------------|
| 300 | LOWER BASKET GROUP (45)     |
| 301 | LOWER BASKET WHEEL GROUP/45 |
| 360 | UNIVERSAL BASKET GR-7046    |

MAY 2018



| NO  | PART NAME             |
|-----|-----------------------|
| 350 | UPPER BASKET GROUP-82 |
| 351 | MUG SHELVE            |
| 355 | PLASTIC HANDLE        |
| 352 | UPPER BASKET WHEEL GR |



| NO  | PART NAME                                 |
|-----|---|
| 400 | CON.PAN.GROUP ( 401-402-403-404-405-406 ) |
| 401 | CON.PAN.PRINTED                           |
| 402 | ELECTRONIC BUTTON                         |
| 403 | CLICK SPRING                              |
| 404 | LIGHT GUIDE-1                             |
| 405 | LIGHT GUIDE-2                             |
| 408 | DISPLAY CARD D41                          |
| 42  | SCREW PT3,5X9 YSB                         |
| 419 | DISPLAY BOX                               |
| 420 | DISPLAY BOX COVER                         |

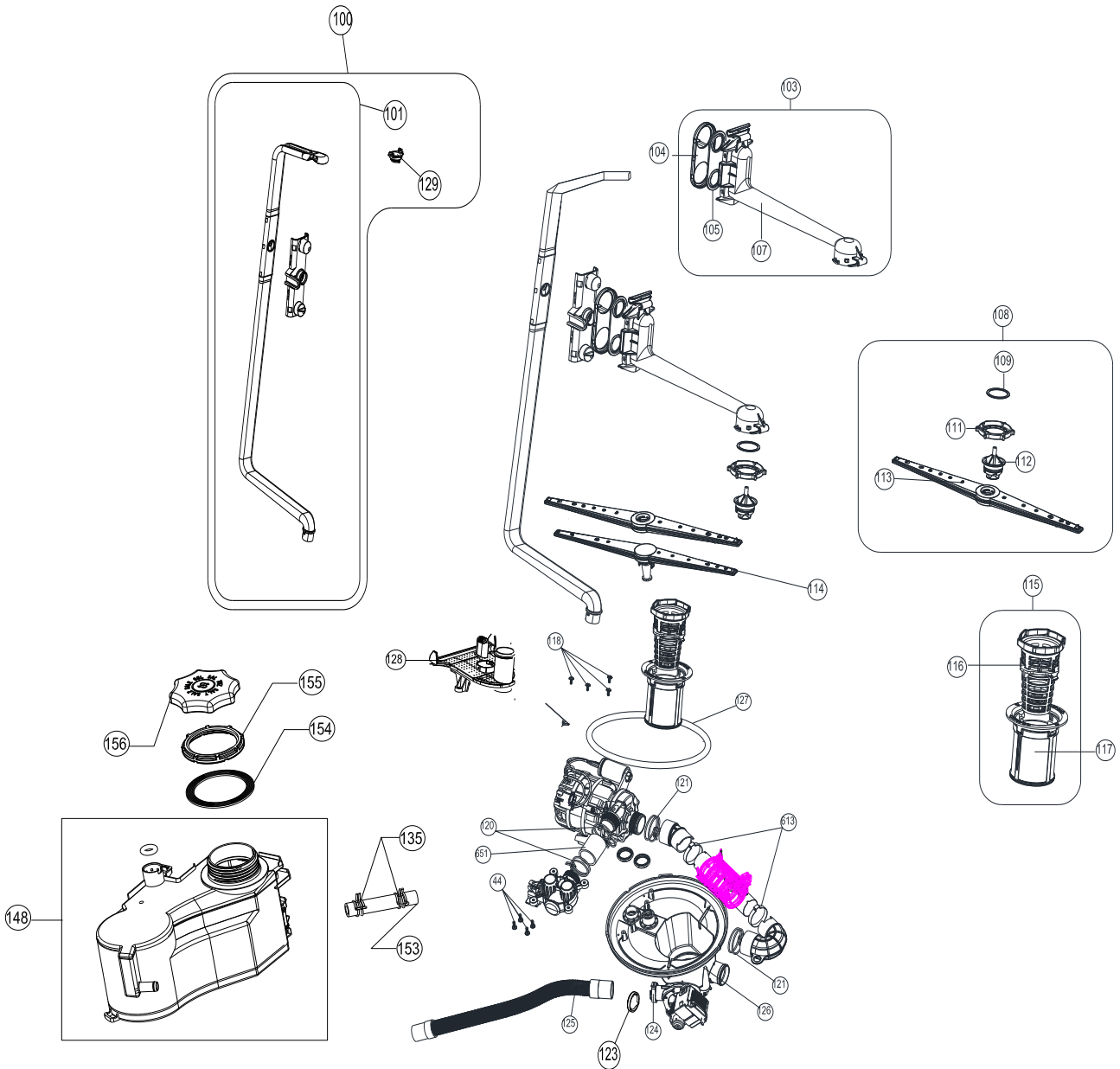
# VESTEL

WHITE GOODS

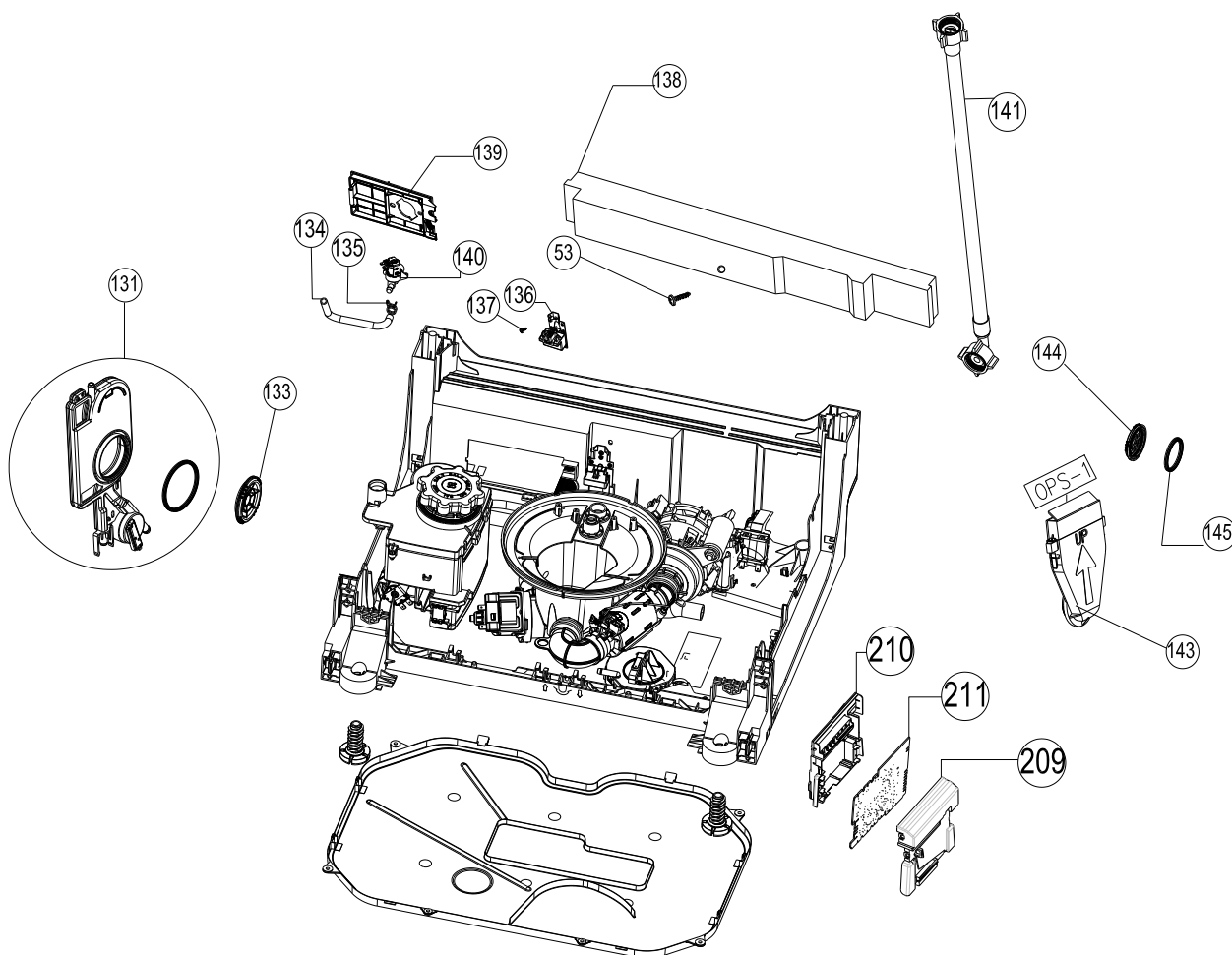
## VESTEL DISWASHER MACH .

### UPPER HDYROLIC GROUP

## CUSTOMER SUPPORT



| NO         | PART NAME  |
|------------|--|
| <b>100</b> | <b>UPPER SPRAYARM FEEDING CAN-C GR-RAL 7046 (101-129)</b>  |
| 101        | UPPER SPRAY ARM FEEDING CANAL-C-RAL 7046                   |
| 129        | FEED PIPE NOZZLE-RAL 7046                                  |
| <b>103</b> | <b>UPPER SPRAY ARM SUPPORT GR-RAL 7046 ( 104-105-107 )</b> |
| 104        | UPPER SPRAY ARM ADAPTER COVER-RAL 7046                     |
| 105        | UPPER SPRAY ADAPTER SEAL                                   |
| 107        | UPPER SPRAY ARM SUPPORT-RAL 7046                           |
| <b>108</b> | <b>UPPER SPRAY ARM GR-RAL 7046 (113-112-111-109)</b>       |
| 109        | UPPER SPRAY ARM NUT PLS D28XT1,2                           |
| 111        | UPPER SPRAY ARM NUT-RAL 7046                               |
| 112        | UPPER SPRAY ARM SHAFT WITHOUT O-RING                       |
| 113        | UPPER SPRAY ARM-RAL 7046                                   |
| <b>115</b> | <b>MICROFILTER GR-SHEET/RAL 7046 (116-117)</b>             |
| 116        | COURSE FILTER-RAL 7046                                     |
| 117        | MICROFILTER-SHEET/RAL 7046                                 |
| 118        | SCREW PT4X12 YSB INOX                                      |
| 120        | CLAMP Dmax36,4X14  |
| 121        | CLAMP Dmax41X14,8  |
| 651        | HOSE D28,5X3X38,5 - (motor - diverter)                     |
| 123        | KLAPE  |
| 124        | HOSE HANDCUFFS D30   |
| 125        | DRAIN HOSE 200 CM  |
| 126        | SUMP GR/45/FT/ECO  |
| 127        | SUMP SEAL  |
| 128        | SPRAY ARM SUPPORT  |
| 44         | SCREW PT4X12YSB  |
| <b>148</b> | <b>WATER SOFTENER GR WITH REED RELAY/45</b>                |
| 135        | CLAMP Dmax16,8x8,4   |
| 153        | HOSE D10,5*3*86,6  |
| 154        | WATER SOFTENER NUT GASKET                                  |
| 155        | WATER SOFTENER NUT RAL-7046                                |
| 156        | SALT CAP GR(MAGNETIC)RAL-7046                              |



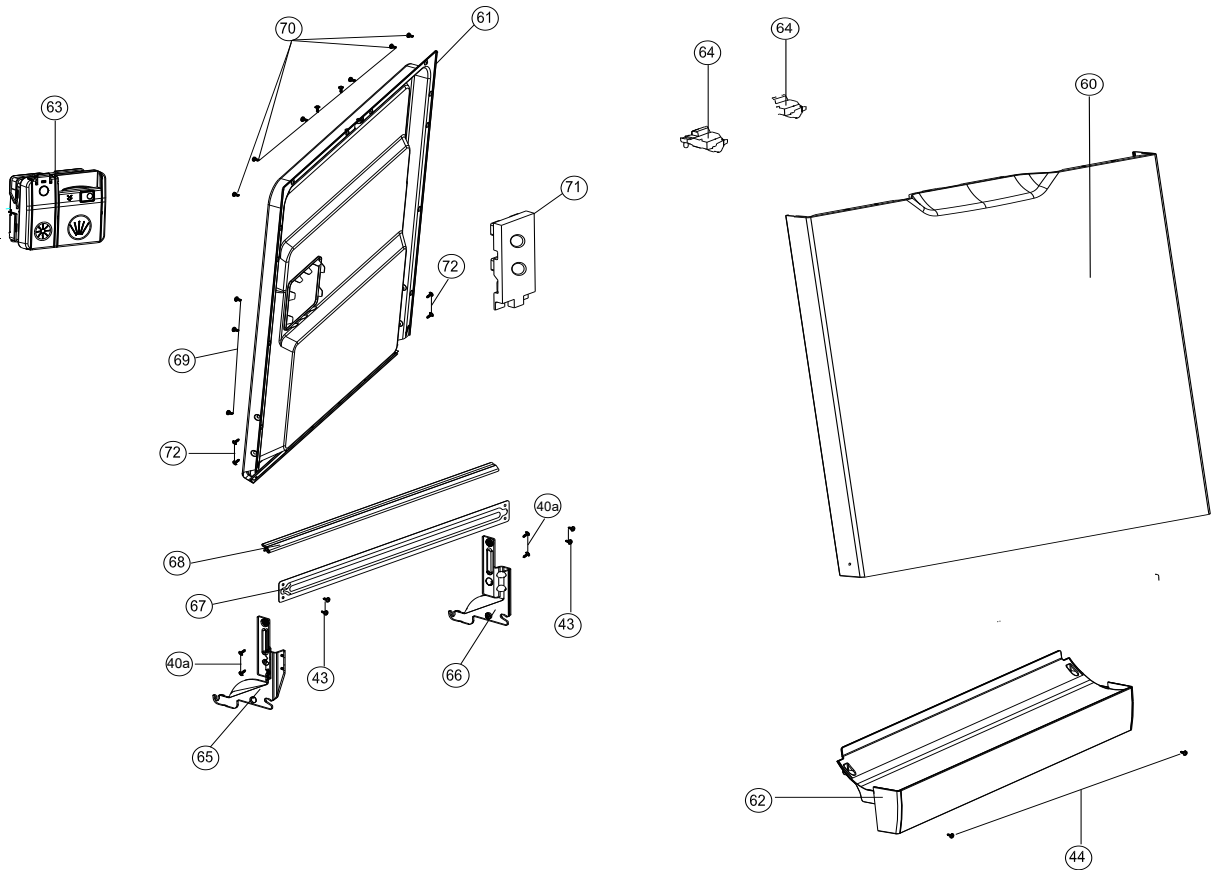
| NO   | PART NAME                                |
|------|--|
| 131  | AIR BREAK GROUP                          |
| 133  | AIR BREAK NUT                            |
| 134  | HOSE D10*3*230                           |
| 135  | CLAMP Dmax16,8x8,4                       |
| 136  | PARASITE FILTE                           |
| 137  | SCREW PT3X9 YSB                          |
| 138  | CONCRETE WEIGHT                          |
| 139  | BASEMENT HOSE.CON.PLS.                   |
| 140a | WATER INLET VALVE GR/FT(140-135-139-134) |
| 140  | WATER INLET VALVE                        |
| 141  | WATER INLET VALVE HOSE                   |
| 143  | ACTIVE DRYING UNIT                       |
| 144  | STEAM CONDERSER NUT                      |
| 145  | STEAM CONDERSER SEALING GASKET           |
| 209  | PCB BOX                                  |
| 210  | PCB BOX COVER                            |
| 211  | ELECT. CARD                              |
| 53   | SCREW 4X42,5 YHB                         |

**VESTEL**

WHITE GOODS

VESTEL DISWASHER MACH .

DOOR GROUP

CUSTOMER  
SUPPORT

| NO  | PART NAME                           |
|-----|-------------------------------------|
| 60  | DOOR OUTSIDE                        |
| 61  | DOOR INSIDE SHEETIRON GROUP         |
| 62  | PLASTIC KICK PLATE                  |
| 63  | DISPANSER WITHOUT REED RELAY        |
| 64  | DOOR LOCK                           |
| 65  | HINGE MOVEMENT SHEETIRON LEFT       |
| 66  | HINGE MOVEMENT SHEETIRON RIGHT      |
| 67  | TWISTED SHEETIRON                   |
| 68  | DOOR SEAL                           |
| 69  | SCREW ST 3,9X12 FLAT HEAD INOX      |
| 70  | SCREW PT4X14 FLAT HEAD INOX         |
| 71  | DOOR SUPPORT STYROFOAM              |
| 72  | SCREW M5X10 TORK HEAD (S)           |
| 43  | SCREW M4X9 PAN HEAD (S)             |
| 44  | SCREW PT 4X12 PAN HEAD COLLAR CROSS |
| 40a | SCREW M4X6 YSB SPIRAL               |

MAY 2018

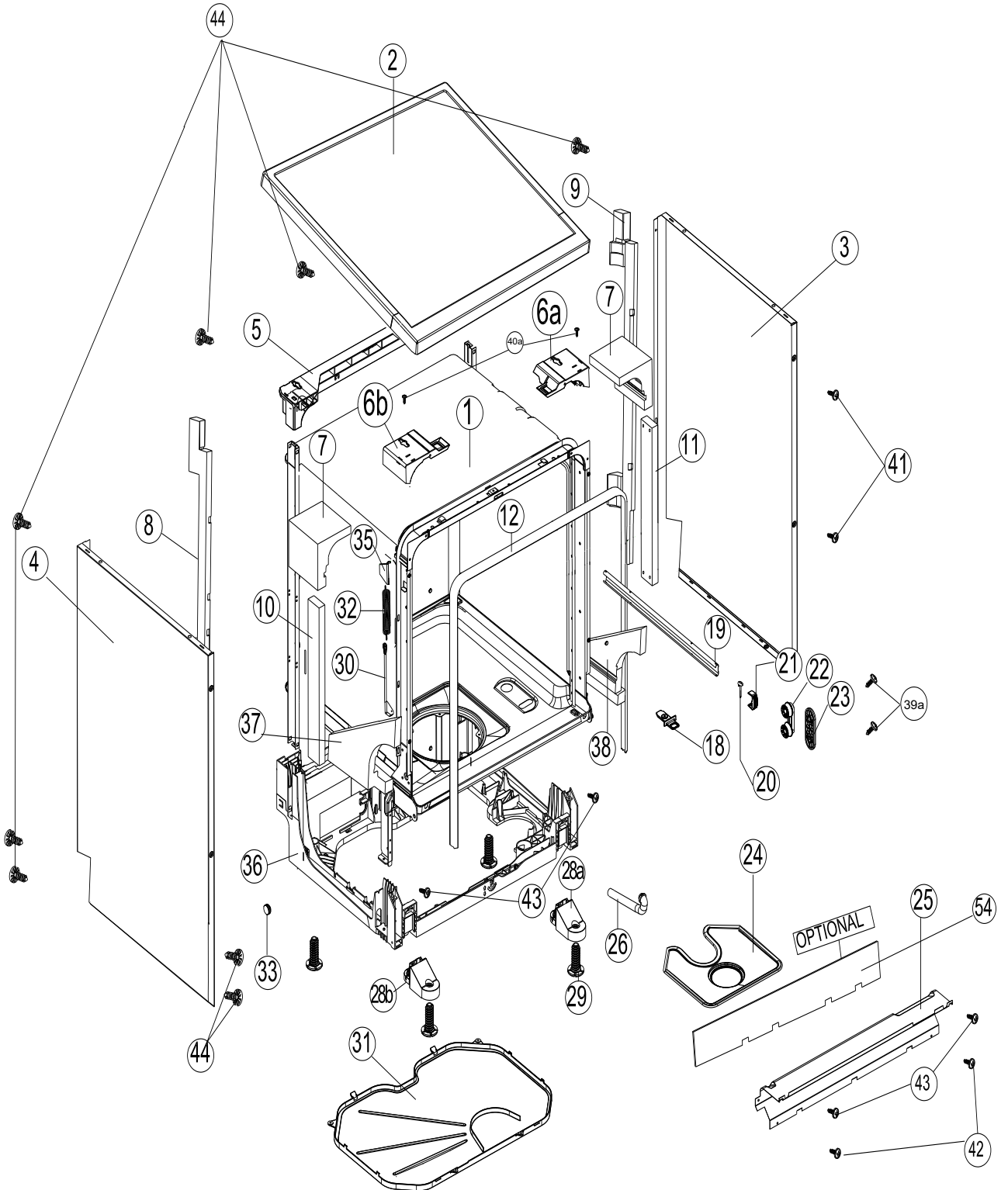
**VESTEL**

WHITE GOODS

VESTEL DISWASHER MACH .

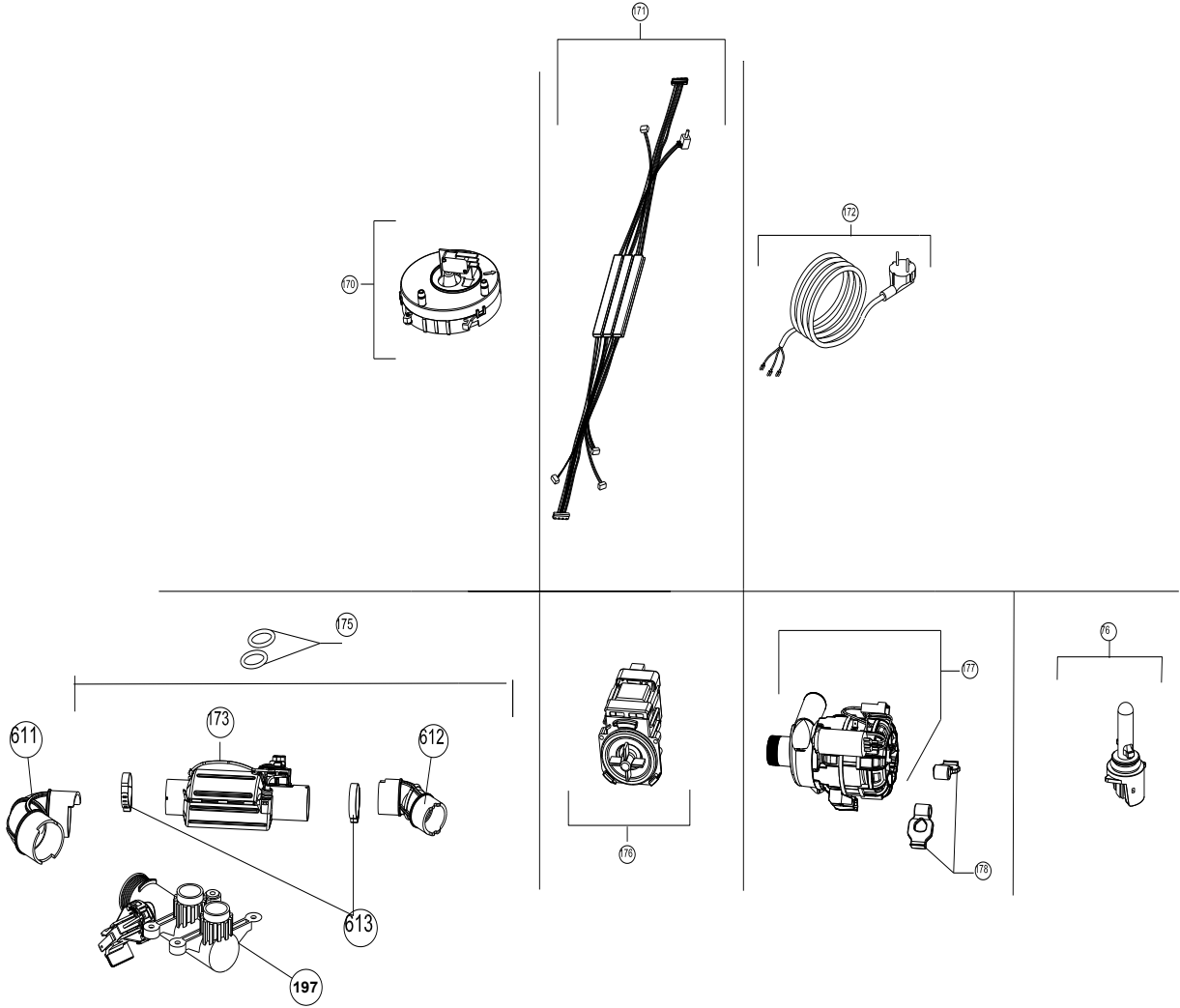
TUBE GROUP

CUSTOMER  
SUPPORT





| NO  | PART NAME                               |
|-----|---|
| 1   | TUBE ASSEMBLY                           |
| 2   | UPPER TRAY GROUP                        |
| 3   | FLAT/SIDE PANEL SHEETIRON-RIGHT         |
| 4   | FLAT/SIDE PANEL SHEETIRON-LEFT          |
| 5   | REAR UPPER PLS.CROSS BAR                |
| 6a  | UPPER TRAY SUPPORT PART - RIGHT         |
| 6b  | UPPER TRAY SUPPORT PART - LEFT          |
| 7   | TUB TOP CORNER STYROFOAM                |
| 8   | BACK CROSS BAR STYROFOAM-LEFT           |
| 9   | BACK CROSS BAR STYROFOAM-RIGHT          |
| 10  | FRONT CROSS BAR STYROFOAM-LEFT          |
| 11  | FRONT CROSS BAR STYROFOAM-RIGHT         |
| 12  | TUB GASKET                              |
| 18  | BOTTOM CORNER GASKET-LEFT               |
| 19  | UPPER BASKET RAIL                       |
| 20  | UPPER BASKET STOPPER-REAR               |
| 21  | UPPER BASKET RAIL LOCK-FRONT            |
| 22  | UPPER BASKET RAIL CON.BRA.GROUP         |
| 23  | UPPER BASKET RAIL CON.BRA -REAR         |
| 24  | METAL FILTER                            |
| 25  | KICKPLATE SHEETIRON                     |
| 26  | OVERFLOW PIECE FROM TUB WITH HOSE/265mm |
| 28a | FRONT FOOT CONN.PART-2 RIGHT            |
| 28b | FRONT FOOT CONN.PART-2 LEFT             |
| 29  | ADJUSTED FOOT                           |
| 30  | HINGE CORD GROUP                        |
| 31  | LOWER COVER                             |
| 32  | HINGE SPRING                            |
| 33  | HINGE PULLEY                            |
| 35  | SPRING CONNECTION PART                  |
| 36  | BASEMENT                                |
| 37  | TUB LOWER CORNER STYROFOAM-LEFT         |
| 38  | TUB LOWER CORNER STYROFOAM-RIGHT        |
| 39a | SCREW PT5X20 TORX WITH RONDELA          |
| 40a | SCREW M4X6 YSB SPIRAL                   |
| 41  | SCREW 3,9X9,5 FLAT HEAD                 |
| 42  | SCREW PT3,5X9 PAN HEAD                  |
| 43  | SCREW M4*9 SB PAN HEAD ( S )            |
| 44  | SCREWPT4X12YSB                          |
| 54  | BASEMENT FRONT COVER (OPTIONAL)         |



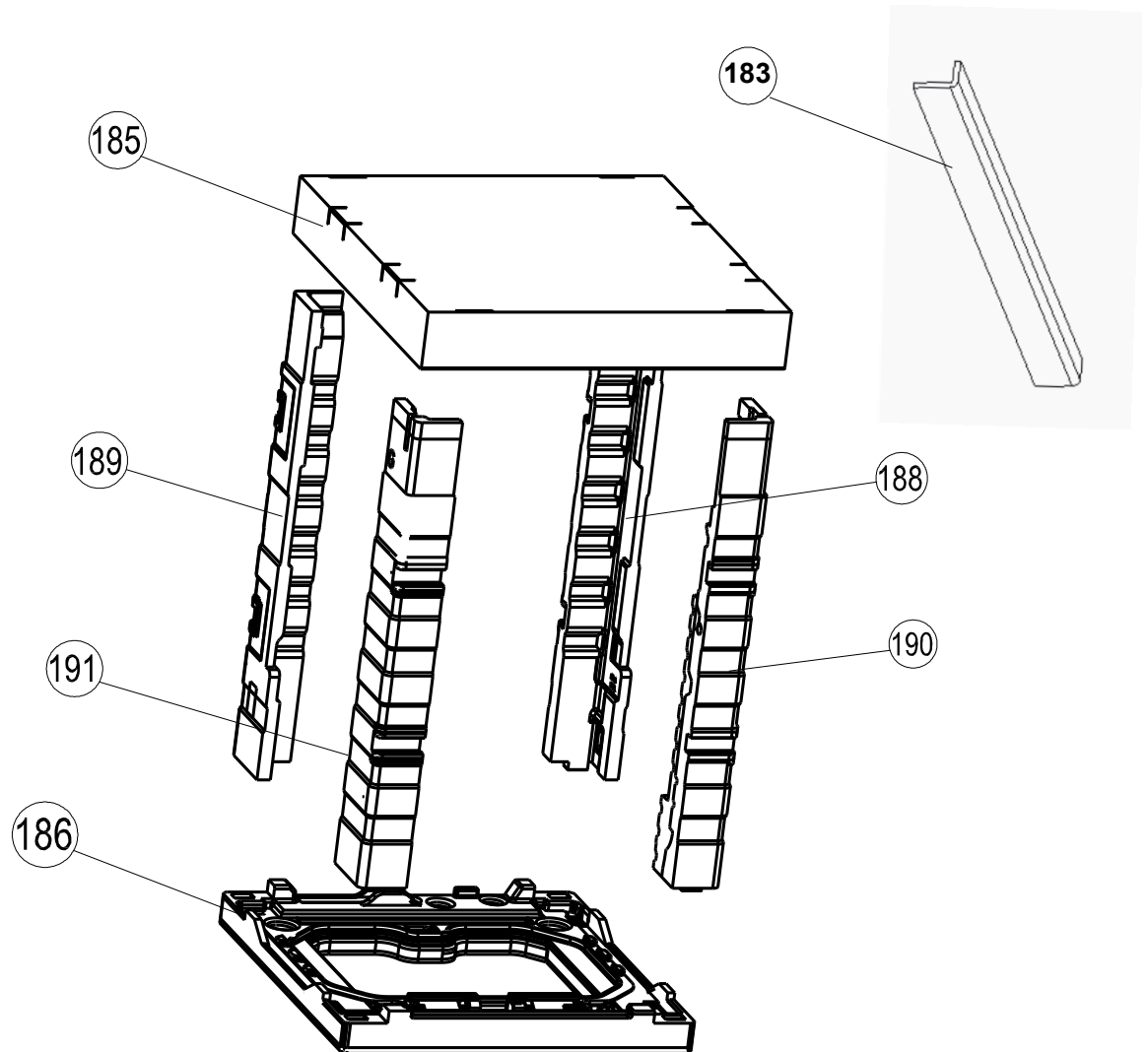
| NO  | PARÇA ADI                         |
|-----|-----------------------------------|
| 170 | FLOATER                           |
| 171 | KABLO AĞACI                       |
| 172 | BESLEME KABLOSU                   |
| 173 | HEATER CASING- DİVİZÖRLÜ          |
| 175 | HEATER CASING O-RİNG              |
| 176 | BOŞALTMA POMPASI                  |
| 177 | YIKAMA POMPASI                    |
| 178 | YIKAMA POMPASI ASKISI             |
| 76  | NTC/SLIM                          |
| 611 | HORTUM ISITICI-ECO                |
| 612 | HORTUM POMPA ISITICI              |
| 613 | TIRNAKLI TİP KELEPÇE/FLOW THROUGH |
| 197 | ECO                               |

**VESTEL**

WHITE GOODS

VESTEL DISWASHER MACH .

OPTIONAL PARTS

CUSTOMER  
SUPPORT

| NO  | PART NAME             |
|-----|-----------------------|
| 185 | UPPER CARTON          |
| 186 | BASEMENT STYROFOAM    |
| 188 | REAR STYROFOAM-RIGHT  |
| 189 | REAR STYROFOAM-LEFT   |
| 190 | FRONT STYROFOAM-RIGHT |
| 191 | FRONT STYROFOAM-LEFT  |
| 183 | L CORNER CARDBOARD    |

MAY 2018